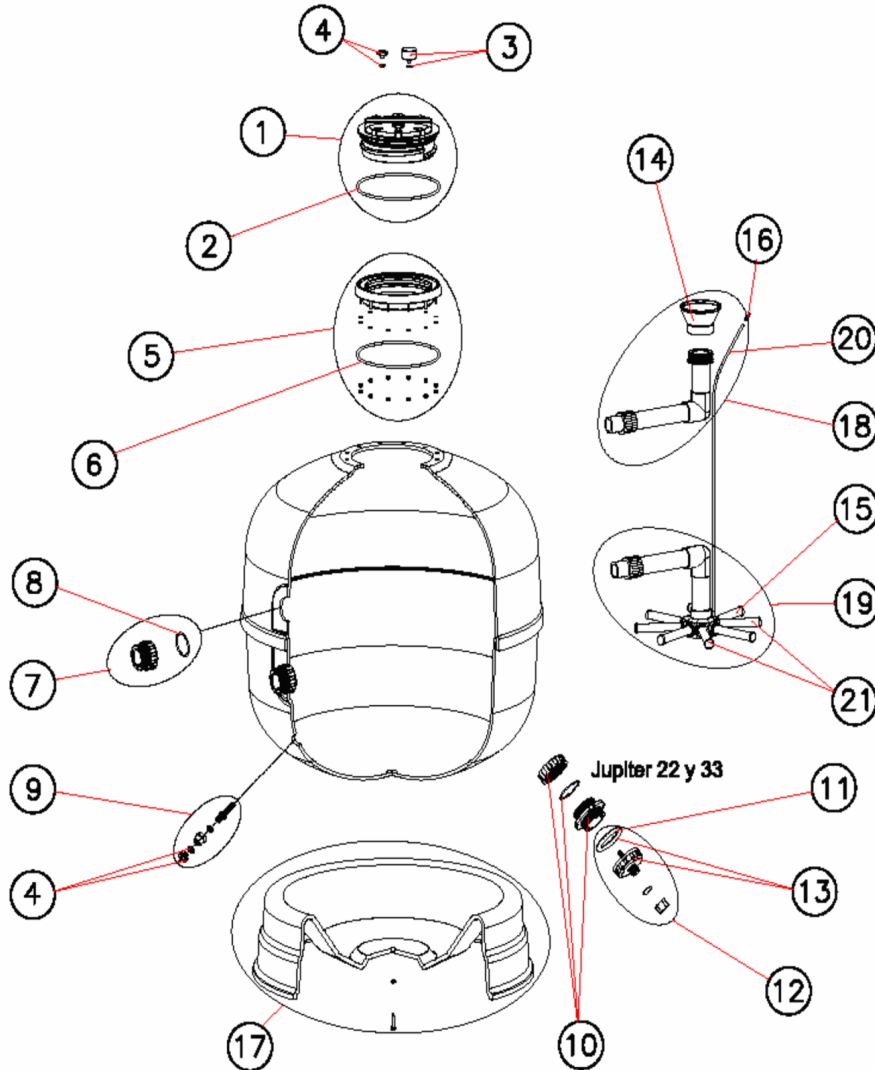


CODIGO 10010WSAOT, 10011WSAOT, 10012WSAOT, 10013WSAOT, 10015WSAOT

DESCRIPCION: FILTRO JUPITER TAPA ROSCADA



ESPAÑOL

POS	CODIGO	DESCRIPCION	POS	CODIGO	DESCRIPCION
1	CE04020003	TAPA ROSCADA + JUNTA	16	CE04040108	PURGA AIRE
2	CE04260202	JUNTA TAPA	17	* CE04010296	PIE FILTRO 9
3	CE04180405	MANOMETRO 1/8" 3 KG/CM	17	* CE04010297	PIE FILTRO 14
4	CE04040113	TAPON PURGA Y JUNTA	17	* CE04010298	PIE FILTRO 18-22
5	CE04260205	ARO TAPA COMPLETO	17	* CE04010299	PIE FILTRO 33
6	CE04020116	JUNTA TORICA 255X4	18	* CE04010300	CJTO. DIFUSOR 9
7	* CE04230107	RACORD 1 1/2" + JUNTA TORICA	18	* CE04010119	CJTO. DIFUSOR D. 600
7	* CE04302131	RACORD 2" + JUNTA	18	* CE04010303	CJTO. DIFUSOR 18
8	CE04040115	JUNTA TORICA D. 60X8	18	* CE04010120	CJTO. DIFUSOR D. 750
9	CE04040110	PURGA AGUA 3/8" NUEVA	18	* CE04010304	CJTO. DIFUSOR 33
10	CE04260501	MANGUITO BOCA DESCARGA	19	* CE04260015	CONJ. COLECTOR D. 450
11	CE04180108	JUNTA PLANA FILTRO	19	* CE04010305	CJTO. COLECTOR 14
12	CE04180114	PURGA ARENA 2"	19	* CE04010306	CJTO. COLECTOR 18
13	CE04290106	TUERCA DESCARGA EXTERIOR	19	* CE04010307	CJTO. COLECTOR 22
14	* CE04301004	CONO DIFUSOR D.50	19	* CE04010308	CJTO. COLECTOR 33
14	* CE04300910	CONO DIFUSOR D. 63	20	CE04301003	PURGA AIRE + TUBO L=670
15	* CE04300917	BRAZO COLECTOR 1" 110 MM	21	* CE04010025	CJTO. BRAZOS COLECTOR D. 400
15	* CE04300915	BRAZO COLECTOR 1" 175 MM	21	* CE04010026	CJTO. BRAZOS COLECTOR D. 500
15	* CE04290109	BRAZO COLECTOR 1" 265 MM	21	* CE04010048	CJTO. BRAZOS COLECTOR D. 750

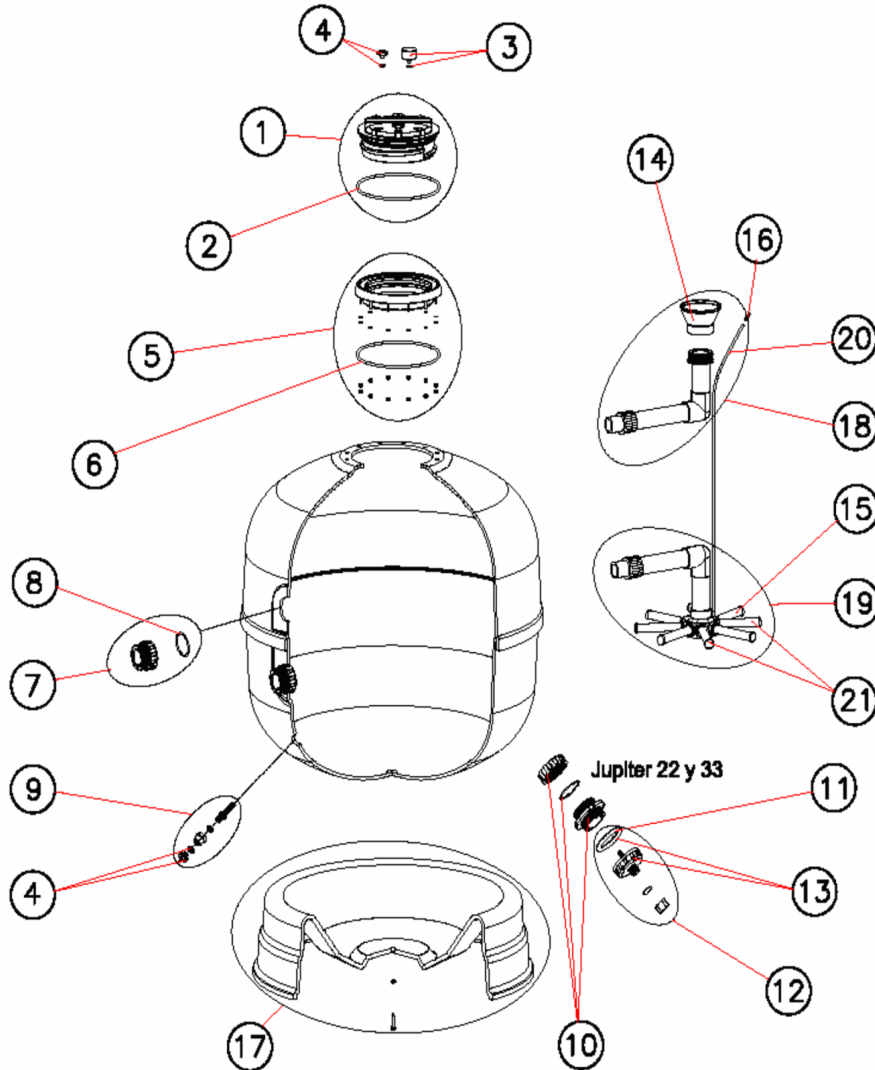
CODIGO **10010WSAOT, 10011WSAOT, 10012WSAOT, 10013WSAOT, 10015WSAOT**DESCRIPCION: **FILTRO JUPITER TAPA ROSCADA**

OBSERVACIONES

POS	CODIGO	OBSERVACIONES
7	CE04230107	PARA 10010WSAOT, 10011WSAOT
7	CE04302131	PARA 10012WSAOT, 10013WSAOT, 10015WSAOT
14	CE04301004	PARA 10010WSAOT, 10011WSAOT
14	CE04300910	PARA 10012WSAOT, 10013WSAOT, 10015WSAOT
15	CE04300917	PARA (10010WSAOT - 4), (10011WSAOT - 4)
15	CE04300915	PARA (10012WSAOT - 4), (10015WSAOT - 4)
15	CE04290109	PARA (10013WSAOT - 6)
17	CE04010296	PARA 10010WSAOT
17	CE04010297	PARA 10011WSAOT
17	CE04010298	PARA 10012WSAOT, 10015WSAOT
17	CE04010299	PARA 10013WSAOT
18	CE04010300	PARA 10010WSAOT
18	CE04010119	PARA 10011WSAOT
18	CE04010303	PARA 10015WSAOT
18	CE04010120	PARA 10012WSAOT
18	CE04010304	PARA 10013WSAOT
19	CE04260015	PARA 10010WSAOT
19	CE04010305	PARA 10011WSAOT
19	CE04010306	PARA 10015WSAOT
19	CE04010307	PARA 10012WSAOT
19	CE04010308	PARA 10013WSAOT
21	CE04010025	PARA 10010WSAOT, 10011WSAOT
21	CE04010026	PARA 10012WSAOT, 10015WSAOT
21	CE04010048	PARA 10013WSAOT

CODE **10010WSAOT, 10011WSAOT, 10012WSAOT, 10013WSAOT, 10015WSAOT**

DESCRIPTION: **FILTRE JUPITER COUVERCLE VISSÉ**



FRANCAIS

POS	CODE	DESCRIPTION	POS	CODE	DESCRIPTION
1	CE04020003	ECROU DE COUVERCLE + JOINT	16	CE04040108	PURGE D'AIR
2	CE04260202	JOINT DE COUVERCLE	17	* CE04010296	SOCLE FILTRE 9
3	CE04180405	"MANOMETRE 1/8" 3 KG./CM"	17	* CE04010297	SOCLE FILTRE 14
4	CE04040113	BOUCHON PURGE ET JOINT	17	* CE04010298	SOCLE FILTRE 18-22
5	CE04260205	BRIDE DE COUVERCLE COMPLETE	17	* CE04010299	SOCLE FILTRE 33
6	CE04020116	JOINT TORIQUE 255X4	18	* CE04010300	ENSEMBLE DIFFUSEUR 9
7	* CE04230107	RACCORD 1 1/2" + JOINT	18	* CE04010119	ENSEMBLE DIFFUSEUR D. 600
7	* CE04302131	"RACCORD 2" + JOINT"	18	* CE04010303	ENSEMBLE DIFFUSEUR 18
8	CE04040115	JOINT TORIQUE D 60X8	18	* CE04010120	ENSEMBLE DIFFUSEUR D. 750
9	CE04040110	"NOUVELLE PURGE D'EAU 3/8"	18	* CE04010304	ENSEMBLE DIFFUSEUR 33
10	CE04260501	RACCORD DÉCHARGE	19	* CE04260015	ENSEMBLE COLLECTEUR D. 450
11	CE04180108	JOINT PLAT FILTRE	19	* CE04010305	ENSEMBLE COLLECTEUR 14
12	CE04180114	"PURGE SABLE 2"	19	* CE04010306	ENSEMBLE COLLECTEUR 18
13	CE04290106	RACCORD DÉCHARGE EXTÉRIEUR	19	* CE04010307	ENSEMBLE COLLECTEUR 22
14	* CE04301004	DIFUSOR CONIQUE SUPÉRIOR D. 50	19	* CE04010308	ENSEMBLE COLLECTEUR 33
14	* CE04300910	DIFUSOR CONIQUE SUPÉRIOR D. 63	20	CE04301003	PURGE AIR + TUBE L=670
15	* CE04300917	"BRAS DE REPARTITEUR 1" 110 MM"	21	* CE04010025	ENSEMBLE BRAS DE REPARTITEUR D. 400
15	* CE04300915	"BRAS DE REPARTITEUR 1" 175 MM"	21	* CE04010026	ENSEMBLE BRAS DE REPARTITEUR D. 500
15	* CE04290109	"BRAS DE REPARTITEUR 1" 265 M/M."	21	* CE04010048	ENSEMBLE BRAS DE REPARTITEUR D. 750

CODE **10010WSAOT, 10011WSAOT, 10012WSAOT, 10013WSAOT, 10015WSAOT**

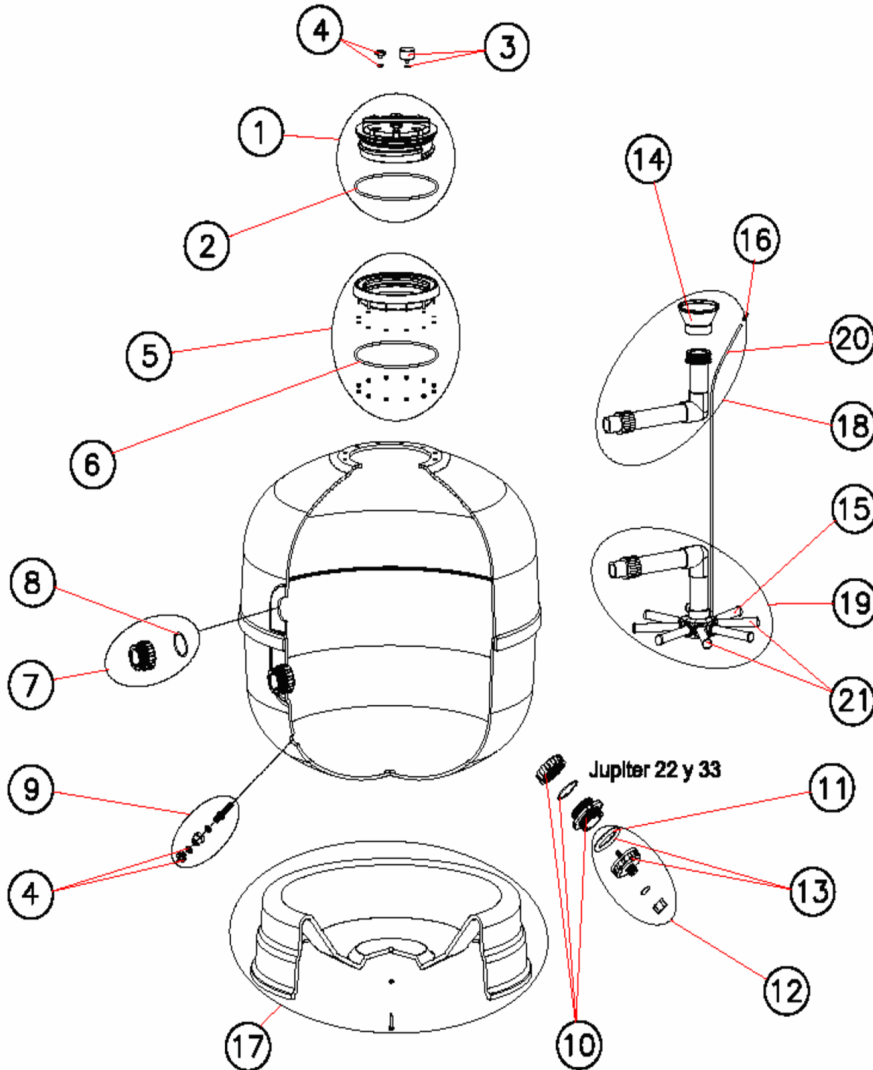
DESCRIPTION: **FILTRE JUPITER COUVERCLE VISSÉ**

OBSERVATIONS

POS	CODE	OBSERVATIONS
7	CE04230107	PARA 10010WSAOT, 10011WSAOT
7	CE04302131	PARA 10012WSAOT, 10013WSAOT, 10015WSAOT
14	CE04301004	PARA 10010WSAOT, 10011WSAOT
14	CE04300910	PARA 10012WSAOT, 10013WSAOT, 10015WSAOT
15	CE04300917	PARA (10010WSAOT - 4), (10011WSAOT - 4)
15	CE04300915	PARA (10012WSAOT - 4), (10015WSAOT - 4)
15	CE04290109	PARA (10013WSAOT - 6)
17	CE04010296	PARA 10010WSAOT
17	CE04010297	PARA 10011WSAOT
17	CE04010298	PARA 10012WSAOT, 10015WSAOT
17	CE04010299	PARA 10013WSAOT
18	CE04010300	PARA 10010WSAOT
18	CE04010119	PARA 10011WSAOT
18	CE04010303	PARA 10015WSAOT
18	CE04010120	PARA 10012WSAOT
18	CE04010304	PARA 10013WSAOT
19	CE04260015	PARA 10010WSAOT
19	CE04010305	PARA 10011WSAOT
19	CE04010306	PARA 10015WSAOT
19	CE04010307	PARA 10012WSAOT
19	CE04010308	PARA 10013WSAOT
21	CE04010025	PARA 10010WSAOT, 10011WSAOT
21	CE04010026	PARA 10012WSAOT, 10015WSAOT
21	CE04010048	PARA 10013WSAOT

CODE 10010WSAOT, 10011WSAOT, 10012WSAOT, 10013WSAOT, 10015WSAOT

DESCRIPTION: THREADED-COVER JUPITER FILTER



ENGLISH

POS	CODE	DESCRIPTION	POS	CODE	DESCRIPTION
1	CE04020003	THREADED COLLAR + GASKET	16	CE04040108	AIR PURGE
2	CE04260202	LID GASKET	17	* CE04010296	FILTER BASE 9
3	CE04180405	"PRESSURE GAUGE 1/8" 3 KG./CM"	17	* CE04010297	FILTER BASE 14
4	CE04040113	DRAIN PLUG AND GASKET	17	* CE04010298	FILTER BASE 18-22
5	CE04260205	LID RING UNIT	17	* CE04010299	FILTER BASE 33
6	CE04020116	'O' RING 255X4	18	* CE04010300	DIFFUSER ASSEMBLY 9
7	* CE04230107	1 1/2" FITTING + GASKET	18	* CE04010119	DIFFUSER ASSEMBLY D. 600
7	* CE04302131	"FITTING 2" + GASKET"	18	* CE04010303	DIFFUSER ASSEMBLY 18
8	CE04040115	O' RING D. 60X8	18	* CE04010120	DIFFUSER ASSEMBLY D. 750
9	CE04040110	NEW WATER PURGE 3/8"	18	* CE04010304	DIFFUSER ASSEMBLY 33
10	CE04260501	BUSH FOR DISCHARGE	19	* CE04260015	MANIFOLD ASSEMBLY D. 450
11	CE04180108	FILTER FLAT GASKET	19	* CE04010305	MANIFOLD ASSEMBLY 14
12	CE04180114	SAND PURGE 2"	19	* CE04010306	MANIFOLD ASSEMBLY 18
13	CE04290106	SCREWDISCHARGE PORT EXTEROR	19	* CE04010307	MANIFOLD ASSEMBLY 22
14	* CE04301004	DIFFUSER CONE D. 50	19	* CE04010308	MANIFOLD ASSEMBLY 33
14	* CE04300910	DIFFUSER CONE D. 63	20	CE04301003	AIR PURGE + PIPE L=670
15	* CE04300917	"MANIFOLD ARM 1" 110 MM"	21	* CE04010025	MANIFOLD ARM ASSEMBLY D. 400
15	* CE04300915	"MANIFOLD ARM 1" 175 MM"	21	* CE04010026	MANIFOLD ARM ASSEMBLY D. 500
15	* CE04290109	"COLLECTOR ARM 1" 265 MM"	21	* CE04010048	MANIFOLD ARM ASSEMBLY D. 750

CODE **10010WSAOT, 10011WSAOT, 10012WSAOT, 10013WSAOT, 10015WSAOT**

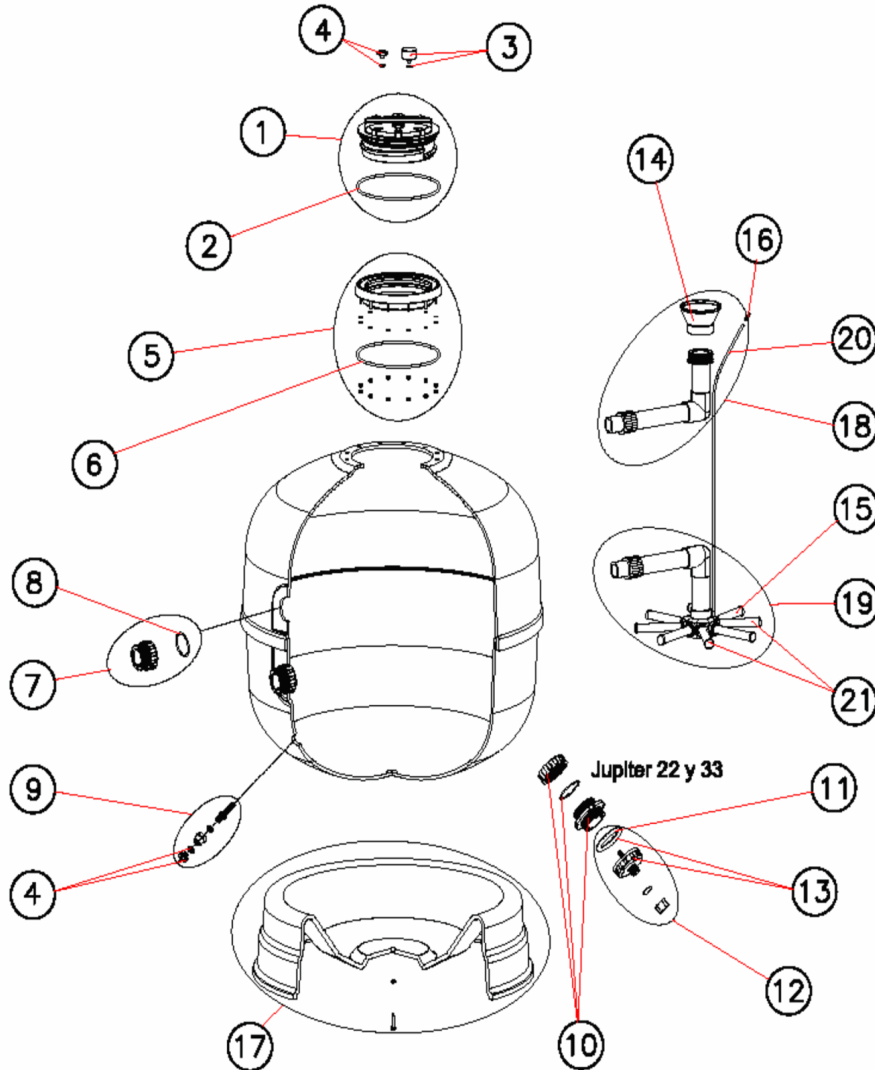
DESCRIPTION: **THREADED-COVER JUPITER FILTER**

OBSERVATIONS

POS	CODE	OBSERVATIONS
7	CE04230107	PARA 10010WSAOT, 10011WSAOT
7	CE04302131	PARA 10012WSAOT, 10013WSAOT, 10015WSAOT
14	CE04301004	PARA 10010WSAOT, 10011WSAOT
14	CE04300910	PARA 10012WSAOT, 10013WSAOT, 10015WSAOT
15	CE04300917	PARA (10010WSAOT - 4), (10011WSAOT - 4)
15	CE04300915	PARA (10012WSAOT - 4), (10015WSAOT - 4)
15	CE04290109	PARA (10013WSAOT - 6)
17	CE04010296	PARA 10010WSAOT
17	CE04010297	PARA 10011WSAOT
17	CE04010298	PARA 10012WSAOT, 10015WSAOT
17	CE04010299	PARA 10013WSAOT
18	CE04010300	PARA 10010WSAOT
18	CE04010119	PARA 10011WSAOT
18	CE04010303	PARA 10015WSAOT
18	CE04010120	PARA 10012WSAOT
18	CE04010304	PARA 10013WSAOT
19	CE04260015	PARA 10010WSAOT
19	CE04010305	PARA 10011WSAOT
19	CE04010306	PARA 10015WSAOT
19	CE04010307	PARA 10012WSAOT
19	CE04010308	PARA 10013WSAOT
21	CE04010025	PARA 10010WSAOT, 10011WSAOT
21	CE04010026	PARA 10012WSAOT, 10015WSAOT
21	CE04010048	PARA 10013WSAOT

CODICE 10010WSAOT, 10011WSAOT, 10012WSAOT, 10013WSAOT, 10015WSAOT

DESCRIZIONE: FILTRO JUPITER COPERCHIO FILETTATO



ITALIANO

POS	CODICE	DESCRIZIONE	POS	CODICE	DESCRIZIONE
1	CE04020003	GHIERA COPERCHIO + GUARNIZIONE	16	CE04040108	SFIATO ARIA
2	CE04260202	GUARNIZIONE COPERCHIO	17	* CE04010296	BASE FILTRO 9
3	CE04180405	"MANOMETRO 1/8" 3 KG./CM"	17	* CE04010297	BASE FILTRO 14
4	CE04040113	TAPPO SPURGO E GUARNIZIONE	17	* CE04010298	BASE FILTRO 18-22
5	CE04260205	FLANGIA COPERCHIO COMPLETO	17	* CE04010299	BASE FILTRO 33
6	CE04020116	O-RING 255X4	18	* CE04010300	RACCORDO DIFFUSORE 9
7	* CE04230107	RACCORDO 1 1/2" + GUAR.	18	* CE04010119	RACCORDO DIFFUSORE D. 600
7	* CE04302131	"RACCORDO 2" + GUARNIZIONE"	18	* CE04010303	RACCORDO DIFFUSORE 18
8	CE04040115	O-RING D 60X8	18	* CE04010120	RACCORDO DIFFUSORE D. 750
9	CE04040110	SCARICO ACQUA 3/8" NUOVO	18	* CE04010304	RACCORDO DIFFUSORE 33
10	CE04260501	MANICOTTO SCARICA	19	* CE04260015	KIT COLLETTORE D. 450
11	CE04180108	GUARNIZIONE PIANA FILTRO	19	* CE04010305	KIT COLLETTORE 14
12	CE04180114	SCARICO SABBIA 2"	19	* CE04010306	KIT COLLETTORE 18
13	CE04290106	GHIERA SCARICO ESTERNA	19	* CE04010307	KIT COLLETTORE 22
14	* CE04301004	CONO DIFFUSORE D. 50	19	* CE04010308	KIT COLLETTORE 33
14	* CE04300910	CONO DIFFUSORE D. 63	20	CE04301003	SPURGO ARIA + TUBO L=670
15	* CE04300917	"CANDELOTTO COLLECTORE 1" 110 MM"	21	* CE04010025	GRUPPO CANDELOTTO COLLECTORE D. 400
15	* CE04300915	"CANDELOTTO COLLECTORE 1" 175 MM"	21	* CE04010026	GRUPPO CANDELOTTO COLLECTORE D. 500
15	* CE04290109	"CANDELOTTO 1" 265 M/M."	21	* CE04010048	GRUPPO CANDELOTTO COLLECTORE D. 750

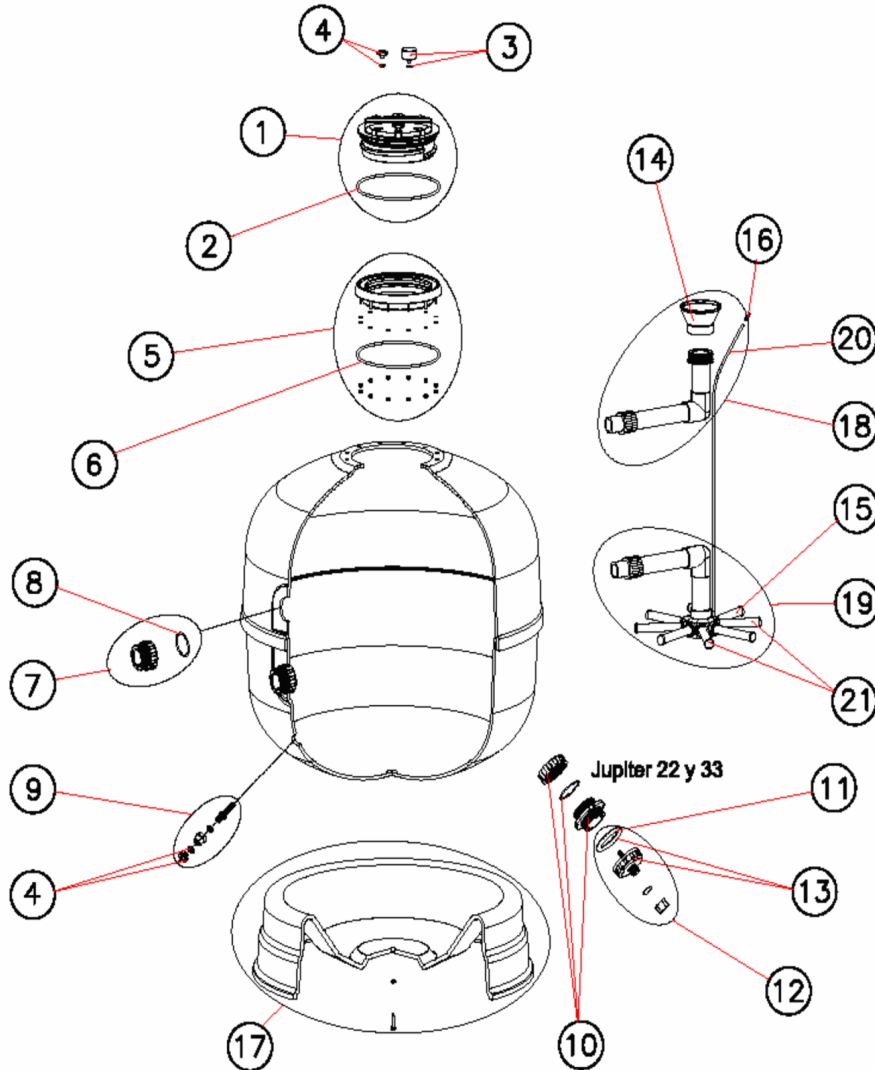
* -> SI FACCIA RIFERIMENTO AL FOGLIO DELLE OSSERVAZIONI

CODICE **10010WSAOT, 10011WSAOT, 10012WSAOT, 10013WSAOT, 10015WSAOT**DESCRIZIONE: **FILTRO JUPITER COPERCHIO FILETTATO****OSSERVAZIONI**

POS	CODICE	OSSERVAZIONI
7	CE04230107	PARA 10010WSAOT, 10011WSAOT
7	CE04302131	PARA 10012WSAOT, 10013WSAOT, 10015WSAOT
14	CE04301004	PARA 10010WSAOT, 10011WSAOT
14	CE04300910	PARA 10012WSAOT, 10013WSAOT, 10015WSAOT
15	CE04300917	PARA (10010WSAOT - 4), (10011WSAOT - 4)
15	CE04300915	PARA (10012WSAOT - 4), (10015WSAOT - 4)
15	CE04290109	PARA (10013WSAOT - 6)
17	CE04010296	PARA 10010WSAOT
17	CE04010297	PARA 10011WSAOT
17	CE04010298	PARA 10012WSAOT, 10015WSAOT
17	CE04010299	PARA 10013WSAOT
18	CE04010300	PARA 10010WSAOT
18	CE04010119	PARA 10011WSAOT
18	CE04010303	PARA 10015WSAOT
18	CE04010120	PARA 10012WSAOT
18	CE04010304	PARA 10013WSAOT
19	CE04260015	PARA 10010WSAOT
19	CE04010305	PARA 10011WSAOT
19	CE04010306	PARA 10015WSAOT
19	CE04010307	PARA 10012WSAOT
19	CE04010308	PARA 10013WSAOT
21	CE04010025	PARA 10010WSAOT, 10011WSAOT
21	CE04010026	PARA 10012WSAOT, 10015WSAOT
21	CE04010048	PARA 10013WSAOT

CODE 10010WSAOT, 10011WSAOT, 10012WSAOT, 10013WSAOT, 10015WSAOT

BESCHREIBUNG: FILTER JUPITER SCHRAUBDECKEL



DEUTSCH

POS	CODE	BESCHREIBUNG	POS	CODE	BESCHREIBUNG
1	CE04020003	ÜBERWURFMUTTER + O-RING	16	CE04040108	FILTER ENTLÜFTUNG
2	CE04260202	DECKELDICHUNG	17	* CE04010296	FUSS FILTER 9
3	CE04180405	"MANOMETER 1/8" 3 KG./CM"	17	* CE04010297	FUSS FILTER 14
4	CE04040113	KAPPE ENTLERUNG UND DICHUNG	17	* CE04010298	FUSS FILTER 18-22
5	CE04260205	EINSATZ RAPID DECKEL KOMPLETT	17	* CE04010299	FUSS FILTER 33
6	CE04020116	O-RING 255X4	18	* CE04010300	OBERER WASSERVERTEILER 9
7	* CE04230107	"BEHÄLTERVERSCHRAUBUNGSSATZ 1 1/2""	18	* CE04010119	OBERER WASSERVERTEILER D. 600
7	* CE04302131	"BEHÄLTERVERSCHRAUBUNGSSATZ 2""	18	* CE04010303	OBERER WASSERVERTEILER 18
8	CE04040115	O-RING D 60X8	18	* CE04010120	OBERER WASSERVERTEILER D. 750
9	CE04040110	"ENTLEERUNG 3/8"" NEW"	18	* CE04010304	OBERER WASSERVERTEILER 33
10	CE04260501	MUFFE ENTLERUNG	19	* CE04260015	UNTERER WASSERVERTEILER D-450
11	CE04180108	FLACHDICHUNG FILTER	19	* CE04010305	UNTERER WASSERVERTEILER 14
12	CE04180114	"ENTLEERUNG 2""	19	* CE04010306	UNTERER WASSERVERTEILER 18
13	CE04290106	MUTTER ENTLERUNG AUSSEN	19	* CE04010307	UNTERER WASSERVERTEILER 22
14	* CE04301004	VERTEILER KONUS D. 50	19	* CE04010308	UNTERER WASSERVERTEILER 33
14	* CE04300910	VERTEILER KONUS D. 63	20	CE04301003	ENTLÜFTUNG + ROHR L=670
15	* CE04300917	"FILTERSTERN SCHLITZROHR 1"" 110 MM"	21	* CE04010025	SET FILTERSTERN SCHLITZROHR D. 400
15	* CE04300915	"FILTERSTERN SCHLITZROHR 1"" 175 MM"	21	* CE04010026	SET FILTERSTERN SCHLITZROHR D. 500
15	* CE04290109	"KOLLEKTORARM 1"" 265 M/M."	21	* CE04010048	SET FILTERSTERN SCHLITZROHR D. 750

* -> SIEHE ANMERKUNGSBLATT

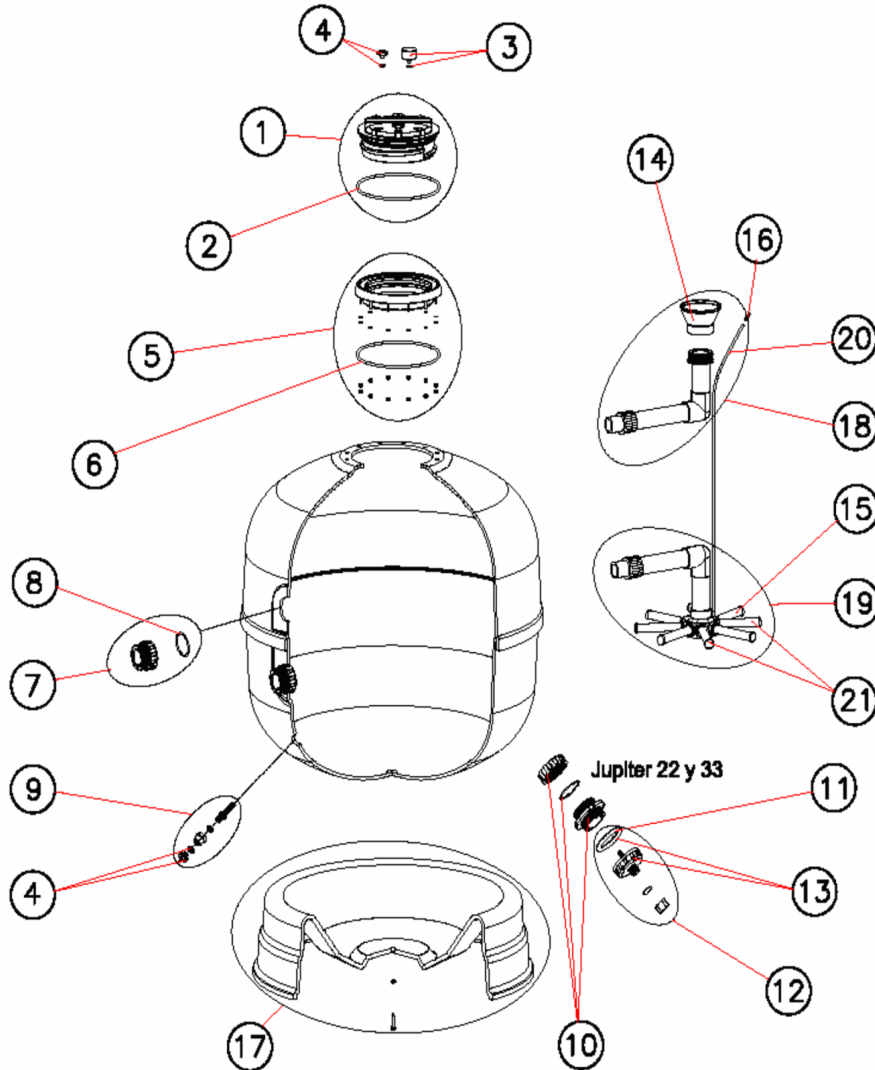
CODE **10010WSAOT, 10011WSAOT, 10012WSAOT, 10013WSAOT, 10015WSAOT**BESCHREIBUNG: **FILTER JUPITER SCHRAUBDECKEL**

HINWEISE

POS	CODE	HINWEISE
7	CE04230107	PARA 10010WSAOT, 10011WSAOT
7	CE04302131	PARA 10012WSAOT, 10013WSAOT, 10015WSAOT
14	CE04301004	PARA 10010WSAOT, 10011WSAOT
14	CE04300910	PARA 10012WSAOT, 10013WSAOT, 10015WSAOT
15	CE04300917	PARA (10010WSAOT - 4), (10011WSAOT - 4)
15	CE04300915	PARA (10012WSAOT - 4), (10015WSAOT - 4)
15	CE04290109	PARA (10013WSAOT - 6)
17	CE04010296	PARA 10010WSAOT
17	CE04010297	PARA 10011WSAOT
17	CE04010298	PARA 10012WSAOT, 10015WSAOT
17	CE04010299	PARA 10013WSAOT
18	CE04010300	PARA 10010WSAOT
18	CE04010119	PARA 10011WSAOT
18	CE04010303	PARA 10015WSAOT
18	CE04010120	PARA 10012WSAOT
18	CE04010304	PARA 10013WSAOT
19	CE04260015	PARA 10010WSAOT
19	CE04010305	PARA 10011WSAOT
19	CE04010306	PARA 10015WSAOT
19	CE04010307	PARA 10012WSAOT
19	CE04010308	PARA 10013WSAOT
21	CE04010025	PARA 10010WSAOT, 10011WSAOT
21	CE04010026	PARA 10012WSAOT, 10015WSAOT
21	CE04010048	PARA 10013WSAOT

CODIGO 10010WSAOT, 10011WSAOT, 10012WSAOT, 10013WSAOT, 10015WSAOT

DESCRIÇÃO: FILTRO JÚPITER TAMPA ENROSCADA



PORTUGUES

POS	CODIGO	DESCRIÇÃO	POS	CODIGO	DESCRIÇÃO
1	CE04020003	TAMPA ROSCADA + JUNTA	16	CE04040108	PURGA AREIA
2	CE04260202	JUNTA TAMPA	17	* CE04010296	PÉ FILTRO 9
3	CE04180405	"MANOMETRO 1/8" 3 KG./CM"	17	* CE04010297	PÉ FILTRO 14
4	CE04040113	TAMPÃO PURGA E JUNTA	17	* CE04010298	PÉ FILTRO 18-22
5	CE04260205	ARO TAMPA COMPLETO	17	* CE04010299	PÉ FILTRO 33
6	CE04020116	JUNTA TÓRICA 255X4	18	* CE04010300	CJTO. DIFUSOR 9
7	* CE04230107	RACORD 1 1/2" + JUNTA	18	* CE04010119	CJTO. DIFUSOR D. 600
7	* CE04302131	"ACOPLADOR 2" E JUNTA"	18	* CE04010303	CJTO. DIFUSOR 18
8	CE04040115	JUNTA TÓRICA D 60X8	18	* CE04010120	CJTO. DIFUSOR D. 750
9	CE04040110	PURGA ÁGUA 3/8" NOVA	18	* CE04010304	CJTO. DIFUSOR 33
10	CE04260501	MANGUITO DESCARREGA	19	* CE04260015	CJTO. COLECTOR D. 450
11	CE04180108	JUNTA PLANA FILTRO	19	* CE04010305	CJTO. COLECTOR 14
12	CE04180114	PURGA AREIA 2"	19	* CE04010306	CJTO. COLECTOR 18
13	CE04290106	PORCA DESCARGA EXTERIOR	19	* CE04010307	CJTO. COLECTOR 22
14	* CE04301004	CONO DIFUSOR D. 50	19	* CE04010308	CJTO. COLECTOR 33
14	* CE04300910	CONO DIFUSOR D. 63	20	CE04301003	PURGAAR + TUBO L=670
15	* CE04300917	"BRAÇO COLECTOR 1" 110 MM"	21	* CE04010025	CJTO. BRAÇO COLECTOR D. 400
15	* CE04300915	"BRAÇO COLECTOR 1" 175 MM"	21	* CE04010026	CJTO. BRAÇO COLECTOR D. 500
15	* CE04290109	"BRAÇO COLECTOR 1" 265 M/M."	21	* CE04010048	CJTO. BRAÇO COLECTOR D. 750

CODIGO **10010WSAOT, 10011WSAOT, 10012WSAOT, 10013WSAOT, 10015WSAOT**DESCRIÇÃO: **FILTRO JÚPITER TAMPA ENROSCADA****OBSERVAÇÕES**

POS	CODIGO	OBSERVAÇÕES
7	CE04230107	PARA 10010WSAOT, 10011WSAOT
7	CE04302131	PARA 10012WSAOT, 10013WSAOT, 10015WSAOT
14	CE04301004	PARA 10010WSAOT, 10011WSAOT
14	CE04300910	PARA 10012WSAOT, 10013WSAOT, 10015WSAOT
15	CE04300917	PARA (10010WSAOT - 4), (10011WSAOT - 4)
15	CE04300915	PARA (10012WSAOT - 4), (10015WSAOT - 4)
15	CE04290109	PARA (10013WSAOT - 6)
17	CE04010296	PARA 10010WSAOT
17	CE04010297	PARA 10011WSAOT
17	CE04010298	PARA 10012WSAOT, 10015WSAOT
17	CE04010299	PARA 10013WSAOT
18	CE04010300	PARA 10010WSAOT
18	CE04010119	PARA 10011WSAOT
18	CE04010303	PARA 10015WSAOT
18	CE04010120	PARA 10012WSAOT
18	CE04010304	PARA 10013WSAOT
19	CE04260015	PARA 10010WSAOT
19	CE04010305	PARA 10011WSAOT
19	CE04010306	PARA 10015WSAOT
19	CE04010307	PARA 10012WSAOT
19	CE04010308	PARA 10013WSAOT
21	CE04010025	PARA 10010WSAOT, 10011WSAOT
21	CE04010026	PARA 10012WSAOT, 10015WSAOT
21	CE04010048	PARA 10013WSAOT