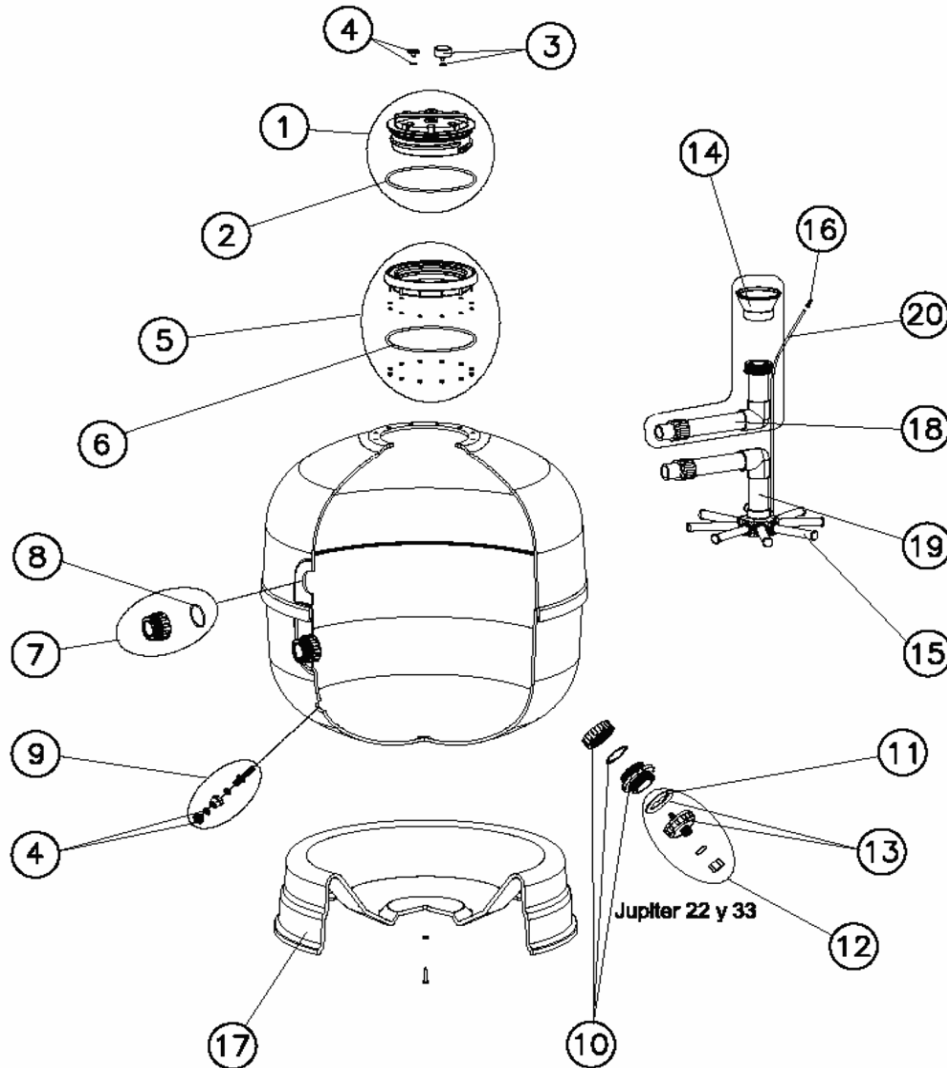


CODIGO 10010WSAOT, 10011WSAOT, 10012WSAOT, 10013WSAOT, 10015WSAOT

DESCRIPCION: FILTRO JUPITER TAPA ROSCADA



ESPAÑOL

POS	CODIGO	DESCRIPCION	POS	CODIGO	DESCRIPCION
1	CE04020003	TAPA ROSCADA + JUNTA	15	* CE04290109	BRAZO COLECTOR 1" 265 MM
2	CE04260202	JUNTA TAPA	16	CE04040108	PURGA AIRE
3	CE04180405	MANOMETRO 1/8" 3 KG/CM	17	* 00498R0403	"PIE 9""
4	CE04040113	TAPON PURGA Y JUNTA	17	* 19781R0401	"PIE 14""
5	CE04260205	ARO TAPA COMPLETO	17	* 144016013	"PIE 18 - 22""
6	CE04020116	JUNTA TORICA 255X4	17	* 00500R0401	"PIE 33""
7	* CE04230107	RACORD 1 1/2" + JUNTA TORICA	18	* 10014R0410	"CJTO. DIFUSOR 9""
7	* CE04302131	RACORD 2" + JUNTA	18	* 00499R0410	CONJUNTO DIFUSOR ASTER D. 600
8	CE04040115	JUNTA TORICA D. 60X8	18	* 10019R0410	"CJTO. DIFUSOR 18""
9	CE04040110	PURGA AGUA 3/8" NUEVA	18	* 00500R0410	CONJ. DIFUSOR D. 750
10	CE04260501	MANGUITO BOCA DESCARGA	18	* 10018R0410	"CJTO. DIFUSOR 33""
11	CE04180108	JUNTA PLANA FILTRO	19	* 15785R0421	"CJTO. COLECTOR VOLCANO D.450 BRAZOS 1""
12	CE04180114	PURGA ARENA 2"	19	* 04967R0421	"CJTO. COLECTOR 14""
13	CE04290106	TUERCA DESCARGA EXTERIOR	19	* 10019R0420	"CJTO. COLECTOR 18""
14	* CE04301004	CONO DIFUSOR D.50	19	* 10017R0420	"CJTO. COLECTOR 22""
14	* CE04300910	CONO DIFUSOR D. 63	19	* 10018R0420	"CJTO. COLECTOR 33""
15	* CE04300917	BRAZO COLECTOR 1" 110 MM	20	CE04301003	PURGA AIRE + TUBO L=670
15	* CE04300915	BRAZO COLECTOR 1" 175 MM			

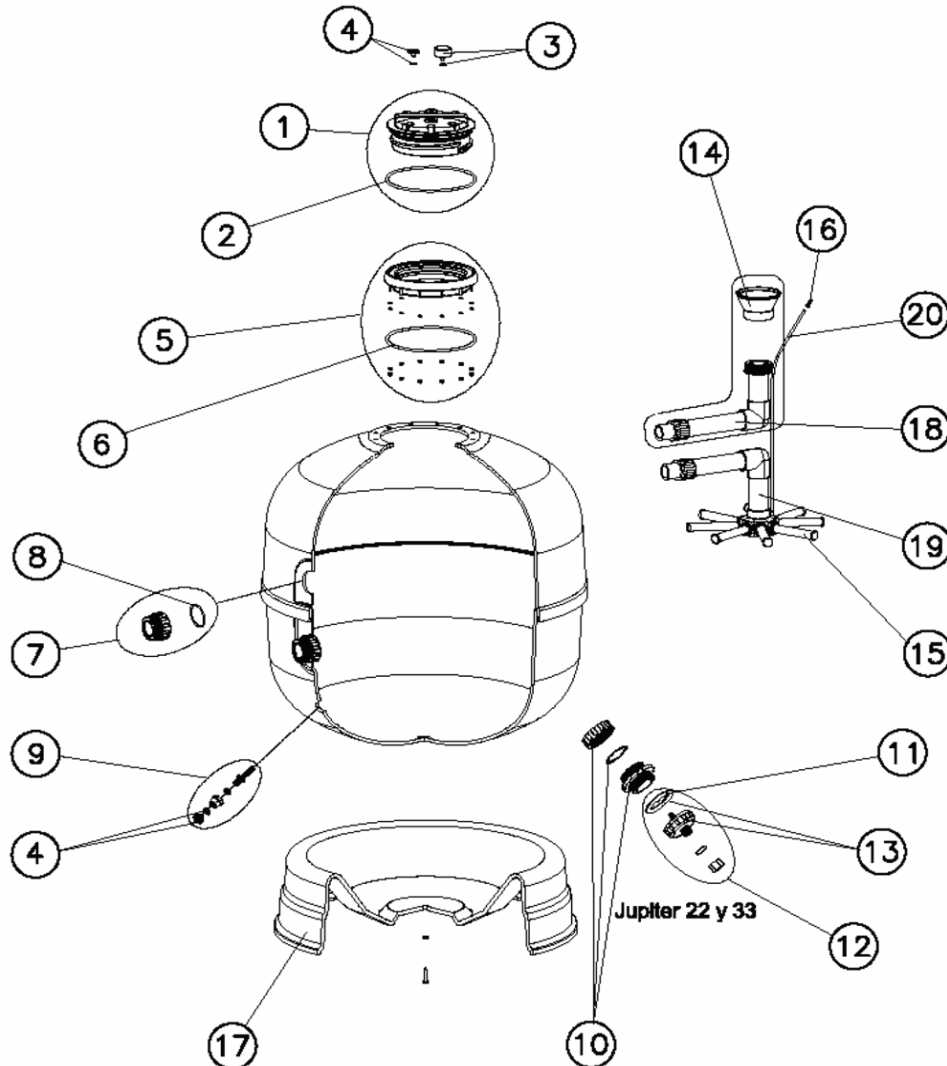
CODIGO **10010WSAOT, 10011WSAOT, 10012WSAOT, 10013WSAOT, 10015WSAOT**DESCRIPCION: **FILTRO JUPITER TAPA ROSCADA**

OBSERVACIONES

POS	CODIGO	OBSERVACIONES
7	CE04230107	PARA 10010WSAOT, 10011WSAOT
7	CE04302131	PARA 10012WSAOT, 10013WSAOT, 10015WSAOT
14	CE04301004	PARA 10010WSAOT, 10011WSAOT
14	CE04300910	PARA 10012WSAOT, 10013WSAOT, 10015WSAOT
15	CE04300917	PARA (10010WSAOT - 4), (10011WSAOT - 4)
15	CE04300915	PARA (10012WSAOT - 4), (10015WSAOT - 4)
15	CE04290109	PARA (10013WSAOT - 6)
17	00498R0403	PARA 10010WSAOT
17	19781R0401	PARA 10011WSAOT
17	144016013	PARA 10012WSAOT, 10015WSAOT
17	00500R0401	PARA 10013WSAOT
18	10014R0410	PARA 10010WSAOT
18	00499R0410	PARA 10011WSAOT
18	10019R0410	PARA 10015WSAOT
18	00500R0410	PARA 10012WSAOT
18	10018R0410	PARA 10013WSAOT
19	15785R0421	PARA 10010WSAOT
19	04967R0421	PARA 10011WSAOT
19	10019R0420	PARA 10015WSAOT
19	10017R0420	PARA 10012WSAOT
19	10018R0420	PARA 10013WSAOT

CODE 10010WSAOT, 10011WSAOT, 10012WSAOT, 10013WSAOT, 10015WSAOT

DESCRIPTION: FILTRE JUPITER COUVERCLE VISSÉ



FRANCAIS

POS	CODE	DESCRIPTION	POS	CODE	DESCRIPTION
1	CE04020003	ECROU DE COUVERCLE + JOINT	15	* CE04290109	"BRAS DE REPARTITEUR 1''' 265 M/M."
2	CE04260202	JOINT DE COUVERCLE	16	CE04040108	PURGE D'AIR
3	CE04180405	"MANOMETRE 1/8''' 3 KG./CM"	17	* 00498R0403	"SOCLE 9''''"
4	CE04040113	BOUCHON PURGE ET JOINT	17	* 19781R0401	"SOCLE 14''''"
5	CE04260205	BRIDE DE COUVERCLE COMPLETE	17	* 144016013	"SOCLE 18 - 22''''"
6	CE04020116	JOINT TORIQUE 255X4	17	* 00500R0401	"SOCLE 33''''"
7	* CE04230107	RACCORD 1 1/2" + JOINT	18	* 10014R0410	"ENSEMBLE DIFFUSEUR 9''''"
7	* CE04302131	"RACCORD 2'''' + JOINT"	18	* 00499R0410	ENSEMBLE DIFFUSEUR D.600
8	CE04040115	JOINT TORIQUE D 60X8	18	* 10019R0410	"ENSEMBLE DIFFUSEUR 18''''"
9	CE04040110	"NOUVELLE PURGE D'EAU 3/8''''"	18	* 00500R0410	ENSEMBLE DIFFUSEUR D. 750
10	CE04260501	RACCORD DÉCHARGE	18	* 10018R0410	"ENSEMBLE DIFFUSEUR 33''''"
11	CE04180108	JOINT PLAT FILTRE	19	* 15785R0421	ENSEMBLE COLLECTEUR D450
12	CE04180114	"PURGE SABLE 2''''"	19	* 04967R0421	"ENSEMBLE COLLECTEUR 14''''"
13	CE04290106	RACCORD DÉCHARGE EXTÉRIEUR	19	* 10019R0420	"ENSEMBLE COLLECTEUR 18''''"
14	* CE04301004	DIFUSOR CONIQUE SUPÉRIOR D. 50	19	* 10017R0420	"ENSEMBLE COLLECTEUR 22''''"
14	* CE04300910	DIFUSOR CONIQUE SUPÉRIOR D. 63	19	* 10018R0420	"ENSEMBLE COLLECTEUR 33''''"
15	* CE04300917	"BRAS DE REPARTITEUR 1''' 110 MM"	20	CE04301003	PURGE AIR + TUBE L=670
15	* CE04300915	"BRAS DE REPARTITEUR 1''' 175 MM"			

CODE **10010WSAOT, 10011WSAOT, 10012WSAOT, 10013WSAOT, 10015WSAOT**

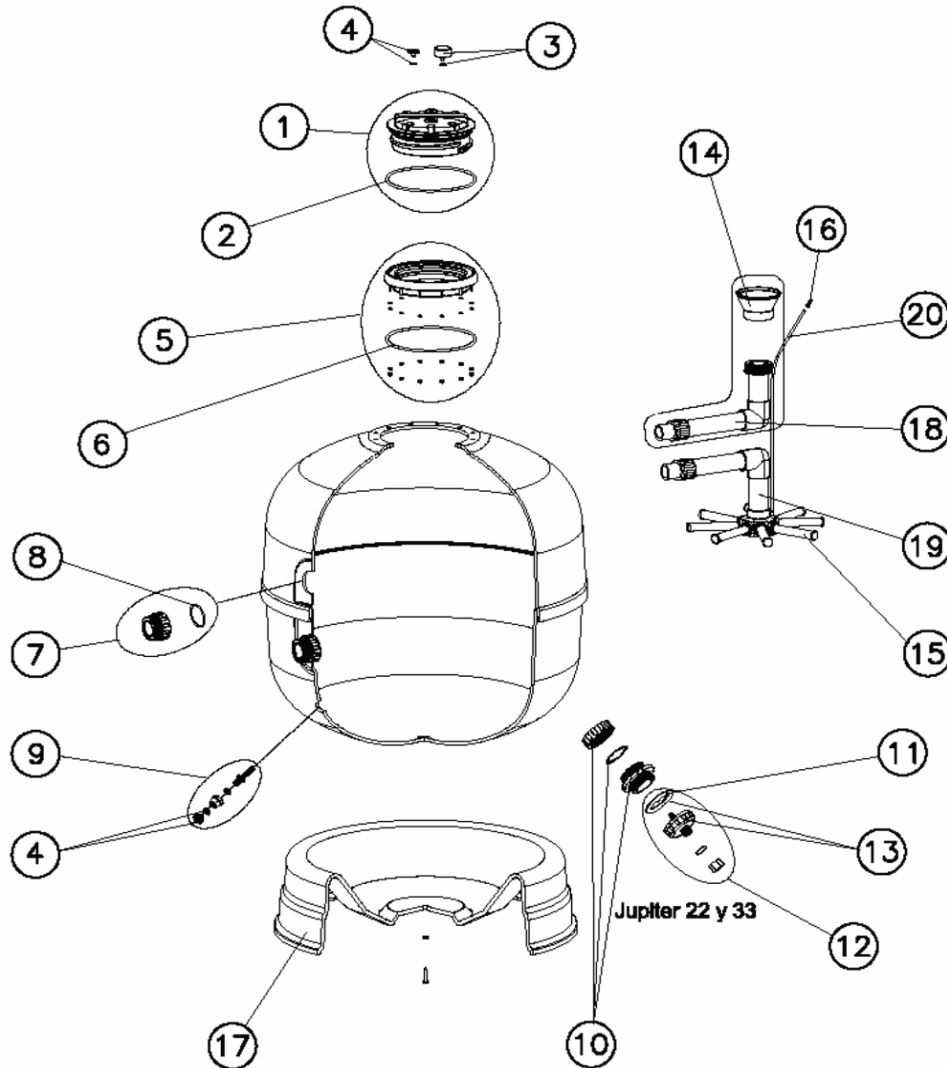
DESCRIPTION: **FILTRE JUPITER COUVERCLE VISSÉ**

OBSERVATIONS

POS	CODE	OBSERVATIONS
7	CE04230107	PARA 10010WSAOT, 10011WSAOT
7	CE04302131	PARA 10012WSAOT, 10013WSAOT, 10015WSAOT
14	CE04301004	PARA 10010WSAOT, 10011WSAOT
14	CE04300910	PARA 10012WSAOT, 10013WSAOT, 10015WSAOT
15	CE04300917	PARA (10010WSAOT - 4), (10011WSAOT - 4)
15	CE04300915	PARA (10012WSAOT - 4), (10015WSAOT - 4)
15	CE04290109	PARA (10013WSAOT - 6)
17	00498R0403	PARA 10010WSAOT
17	19781R0401	PARA 10011WSAOT
17	144016013	PARA 10012WSAOT, 10015WSAOT
17	00500R0401	PARA 10013WSAOT
18	10014R0410	PARA 10010WSAOT
18	00499R0410	PARA 10011WSAOT
18	10019R0410	PARA 10015WSAOT
18	00500R0410	PARA 10012WSAOT
18	10018R0410	PARA 10013WSAOT
19	15785R0421	PARA 10010WSAOT
19	04967R0421	PARA 10011WSAOT
19	10019R0420	PARA 10015WSAOT
19	10017R0420	PARA 10012WSAOT
19	10018R0420	PARA 10013WSAOT

CODE 10010WSAOT, 10011WSAOT, 10012WSAOT, 10013WSAOT, 10015WSAOT

DESCRIPTION: THREADED-COVER JUPITER FILTER



ENGLISH

POS	CODE	DESCRIPTION	POS	CODE	DESCRIPTION
1	CE04020003	THREADED COLLAR + GASKET	15	* CE04290109	"COLLECTOR ARM 1''' 265 MM"
2	CE04260202	LID GASKET	16	CE04040108	AIR PURGE
3	CE04180405	"PRESSURE GAUGE 1/8''' 3 KG./CM"	17	* 00498R0403	"BASE 9''''"
4	CE04040113	DRAIN PLUG AND GASKET	17	* 19781R0401	"BASE 14''''"
5	CE04260205	LID RING UNIT	17	* 144016013	"BASE 18 - 22''''"
6	CE04020116	'O' RING 255X4	17	* 00500R0401	"BASE 33''''"
7	* CE04230107	1 1/2" FITTING + GASKET	18	* 10014R0410	"DIFFUSOR ASSEMBLY 9''''"
7	* CE04302131	"FITTING 2''' + GASKET"	18	* 00499R0410	DIFFUSOR ASSEMBLY ASTER D. 600
8	CE04040115	O' RING D. 60X8	18	* 10019R0410	"DIFFUSOR ASSEMBLY 18''''"
9	CE04040110	NEW WATER PURGE 3/8"	18	* 00500R0410	DIFFUSOR ASSEMBLY D. 750
10	CE04260501	BUSH FOR DISCHARGE	18	* 10018R0410	"DIFFUSOR ASSEMBLY 33''''"
11	CE04180108	FILTER FLAT GASKET	19	* 15785R0421	"COLLECTOR ASSEMBLY VOLCANO D. 450 1''''"
12	CE04180114	SAND PURGE 2"	19	* 04967R0421	"COLLECTOR ASSEMBLY 14''''"
13	CE04290106	SCREWDISCHARGE PORT EXTEROR	19	* 10019R0420	"COLLECTOR ASSEMBLY 18''''"
14	* CE04301004	DIFFUSER CONE D. 50	19	* 10017R0420	"COLLECTOR ASSEMBLY 22''''"
14	* CE04300910	DIFFUSER CONE D. 63	19	* 10018R0420	"COLLECTOR ASSEMBLY 33''''"
15	* CE04300917	"MANIFOLD ARM 1''' 110 MM"	20	CE04301003	AIR PURGE + PIPE L=670
15	* CE04300915	"MANIFOLD ARM 1''' 175 MM"			

CODE **10010WSAOT, 10011WSAOT, 10012WSAOT, 10013WSAOT, 10015WSAOT**

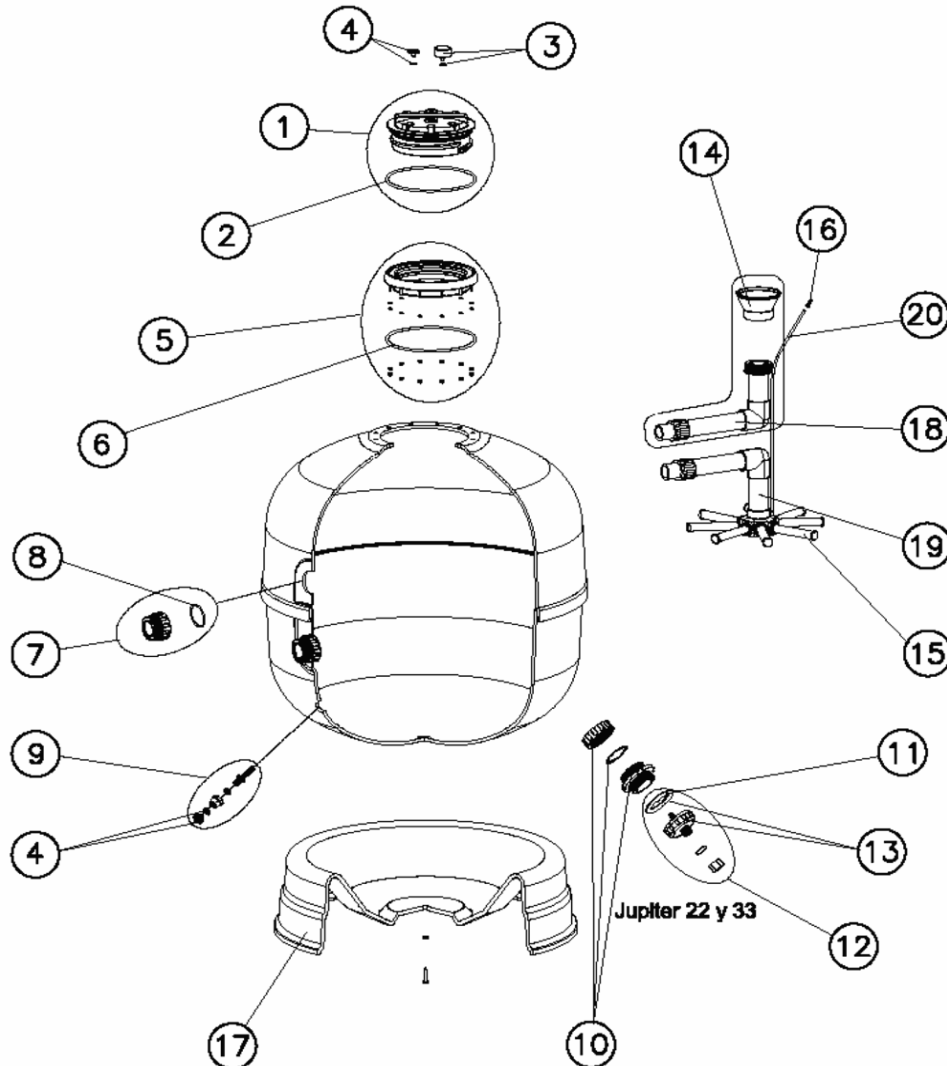
DESCRIPTION: **THREADED-COVER JUPITER FILTER**

OBSERVATIONS

POS	CODE	OBSERVATIONS
7	CE04230107	PARA 10010WSAOT, 10011WSAOT
7	CE04302131	PARA 10012WSAOT, 10013WSAOT, 10015WSAOT
14	CE04301004	PARA 10010WSAOT, 10011WSAOT
14	CE04300910	PARA 10012WSAOT, 10013WSAOT, 10015WSAOT
15	CE04300917	PARA (10010WSAOT - 4), (10011WSAOT - 4)
15	CE04300915	PARA (10012WSAOT - 4), (10015WSAOT - 4)
15	CE04290109	PARA (10013WSAOT - 6)
17	00498R0403	PARA 10010WSAOT
17	19781R0401	PARA 10011WSAOT
17	144016013	PARA 10012WSAOT, 10015WSAOT
17	00500R0401	PARA 10013WSAOT
18	10014R0410	PARA 10010WSAOT
18	00499R0410	PARA 10011WSAOT
18	10019R0410	PARA 10015WSAOT
18	00500R0410	PARA 10012WSAOT
18	10018R0410	PARA 10013WSAOT
19	15785R0421	PARA 10010WSAOT
19	04967R0421	PARA 10011WSAOT
19	10019R0420	PARA 10015WSAOT
19	10017R0420	PARA 10012WSAOT
19	10018R0420	PARA 10013WSAOT

CODICE **10010WSAOT, 10011WSAOT, 10012WSAOT, 10013WSAOT, 10015WSAOT**

DESCRIZIONE: **FILTRO JUPITER COPERCHIO FILETTATO**



ITALIANO

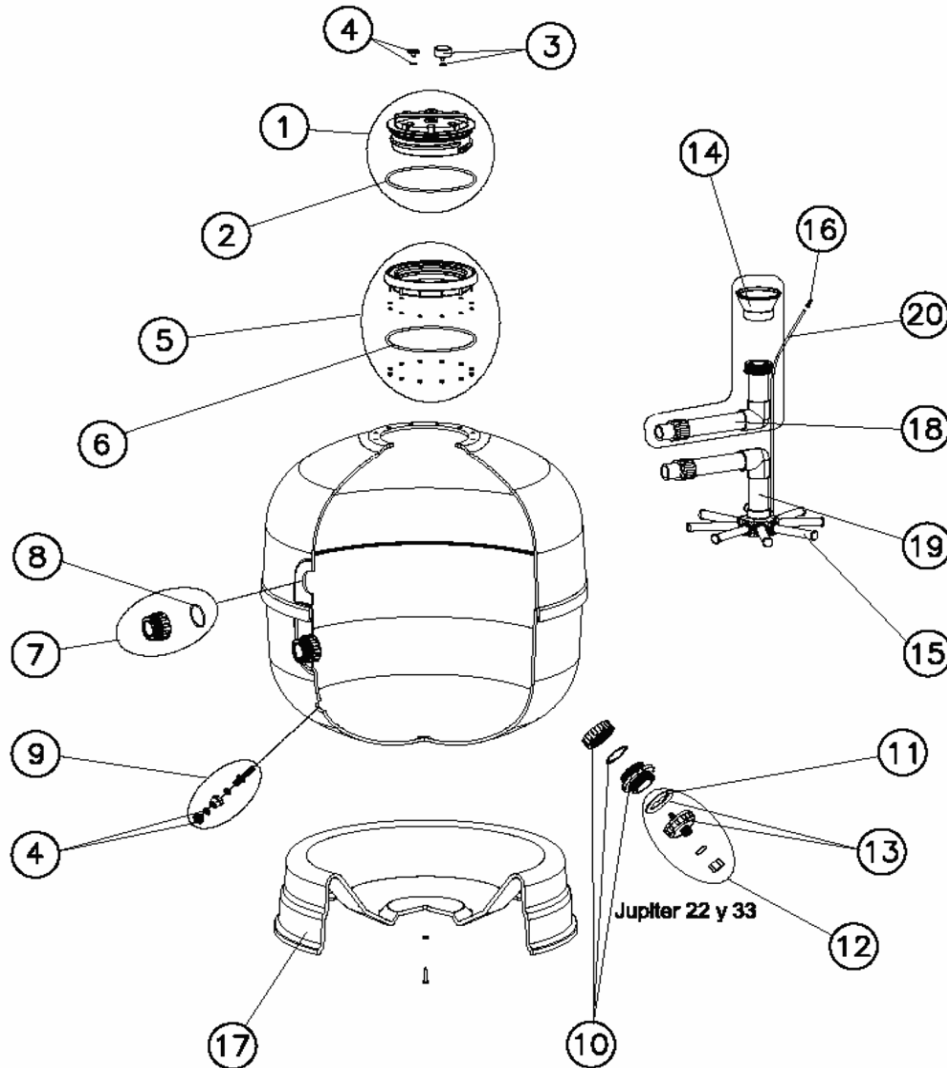
POS	CODICE	DESCRIZIONE	POS	CODICE	DESCRIZIONE
1	CE04020003	GHIERA COPERCHIO + GUARNIZIONE	15	* CE04290109	"CANDELOTTO 1''' 265 M/M."
2	CE04260202	GUARNIZIONE COPERCHIO	16	CE04040108	SFIATO ARIA
3	CE04180405	"MANOMETRO 1/8''' 3 KG./CM"	17	* 00498R0403	"BASE 9''''"
4	CE04040113	TAPPO SPURGO E GUARNIZIONE	17	* 19781R0401	"BASE 14''''"
5	CE04260205	FLANGIA COPERCHIO COMPLETO	17	* 144016013	"BASE 18 - 22''''"
6	CE04020116	O-RING 255X4	17	* 00500R0401	"BASE 33''''"
7	* CE04230107	RACCORDO 1 1/2" + GUAR.	18	* 10014R0410	"RACCORDO DIFFUSORE 9''''"
7	* CE04302131	"RACCORDO 2''' + GUARNIZIONE"	18	* 00499R0410	GRUPPO DIFFUSORE ASTER D. 600
8	CE04040115	O-RING D 60X8	18	* 10019R0410	"RACCORDO DIFFUSORE 18''''"
9	CE04040110	SCARICO ACQUA 3/8" NUOVO	18	* 00500R0410	GRUPPO DIFFUSORE D. 750
10	CE04260501	MANICOTTO SCARICA	18	* 10018R0410	"RACCORDO DIFFUSORE 33''''"
11	CE04180108	GUARNIZIONE PIANA FILTRO	19	* 15785R0421	"KIT COLLETTORE VOLCANO D. 450 1''''"
12	CE04180114	SCARICO SABBIA 2"	19	* 04967R0421	"KIT COLLETTORE 14''''"
13	CE04290106	GHIERA SCARICO ESTERNA	19	* 10019R0420	"KIT COLLETTORE 18''''"
14	* CE04301004	CONO DIFFUSORE D. 50	19	* 10017R0420	"KIT COLLETTORE 22''''"
14	* CE04300910	CONO DIFFUSORE D. 63	19	* 10018R0420	"KIT COLLETTORE 33''''"
15	* CE04300917	"CANDELOTTO COLLECTORE 1''' 110 MM"	20	CE04301003	SPURGO ARIA + TUBO L=670
15	* CE04300915	"CANDELOTTO COLLECTORE 1''' 175 MM"			

CODICE **10010WSAOT, 10011WSAOT, 10012WSAOT, 10013WSAOT, 10015WSAOT**DESCRIZIONE: **FILTRO JUPITER COPERCHIO FILETTATO****OSSERVAZIONI**

POS	CODICE	OSSERVAZIONI
7	CE04230107	PARA 10010WSAOT, 10011WSAOT
7	CE04302131	PARA 10012WSAOT, 10013WSAOT, 10015WSAOT
14	CE04301004	PARA 10010WSAOT, 10011WSAOT
14	CE04300910	PARA 10012WSAOT, 10013WSAOT, 10015WSAOT
15	CE04300917	PARA (10010WSAOT - 4), (10011WSAOT - 4)
15	CE04300915	PARA (10012WSAOT - 4), (10015WSAOT - 4)
15	CE04290109	PARA (10013WSAOT - 6)
17	00498R0403	PARA 10010WSAOT
17	19781R0401	PARA 10011WSAOT
17	144016013	PARA 10012WSAOT, 10015WSAOT
17	00500R0401	PARA 10013WSAOT
18	10014R0410	PARA 10010WSAOT
18	00499R0410	PARA 10011WSAOT
18	10019R0410	PARA 10015WSAOT
18	00500R0410	PARA 10012WSAOT
18	10018R0410	PARA 10013WSAOT
19	15785R0421	PARA 10010WSAOT
19	04967R0421	PARA 10011WSAOT
19	10019R0420	PARA 10015WSAOT
19	10017R0420	PARA 10012WSAOT
19	10018R0420	PARA 10013WSAOT

CODE **10010WSAOT, 10011WSAOT, 10012WSAOT, 10013WSAOT, 10015WSAOT**

BESCHREIBUNG: **FILTER JUPITER SCHRAUBDECKEL**



DEUTSCH

POS	CODE	BESCHREIBUNG	POS	CODE	BESCHREIBUNG
1	CE04020003	ÜBERWURFMUTTER + O-RING	15	* CE04290109	"KOLLEKTORARM 1" 265 M/M."
2	CE04260202	DECKELDICHUNG	16	CE04040108	FILTER ENTLÜFTUNG
3	CE04180405	"MANOMETER 1/8" 3 KG./CM"	17	* 00498R0403	"FUSS 9""
4	CE04040113	KAPPE ENTLERUNG UND DICHUNG	17	* 19781R0401	"FUSS 14""
5	CE04260205	EINSATZ RAPID DECKEL KOMPLETT	17	* 144016013	"FUSS 18 - 22""
6	CE04020116	O-RING 255X4	17	* 00500R0401	"FUSS 33""
7	* CE04230107	"BEHÄLTERVERSCHRAUBUNGSSATZ 1 1/2""	18	* 10014R0410	"OBERER WASSERVEITEILER 9""
7	* CE04302131	"BEHÄLTERVERSCHRAUBUNGSSATZ 2""	18	* 00499R0410	SET VERTEILER ASTER D. 600
8	CE04040115	O-RING D 60X8	18	* 10019R0410	"OBERER WASSERVEITEILER 18""
9	CE04040110	"ENTLEERUNG 3/8"" NEW"	18	* 00500R0410	SET VERTEILER D. 750
10	CE04260501	MUFFE ENTLERUNG	18	* 10018R0410	"OBERER WASSERVEITEILER 33""
11	CE04180108	FLACHDICHTUNG FILTER	19	* 15785R0421	"UNTERER WASSERVEITEILER VOLCANO D. 450 1""
12	CE04180114	"ENTLEERUNG 2""	19	* 04967R0421	"UNTERER WASSERVEITEILER 14""
13	CE04290106	MUTTER ENTLERUNG AUSSEN	19	* 10019R0420	"UNTERER WASSERVEITEILER 18""
14	* CE04301004	VERTEILER KONUS D. 50	19	* 10017R0420	"UNTERER WASSERVEITEILER 22""
14	* CE04300910	VERTEILER KONUS D. 63	19	* 10018R0420	"UNTERER WASSERVEITEILER 33""
15	* CE04300917	"FILTERSTERN SCHLITZROHR 1" 110 MM"	20	CE04301003	ENTLÜFTUNG + ROHR L=670
15	* CE04300915	"FILTERSTERN SCHLITZROHR 1" 175 MM"			

CODE **10010WSAOT, 10011WSAOT, 10012WSAOT, 10013WSAOT, 10015WSAOT**

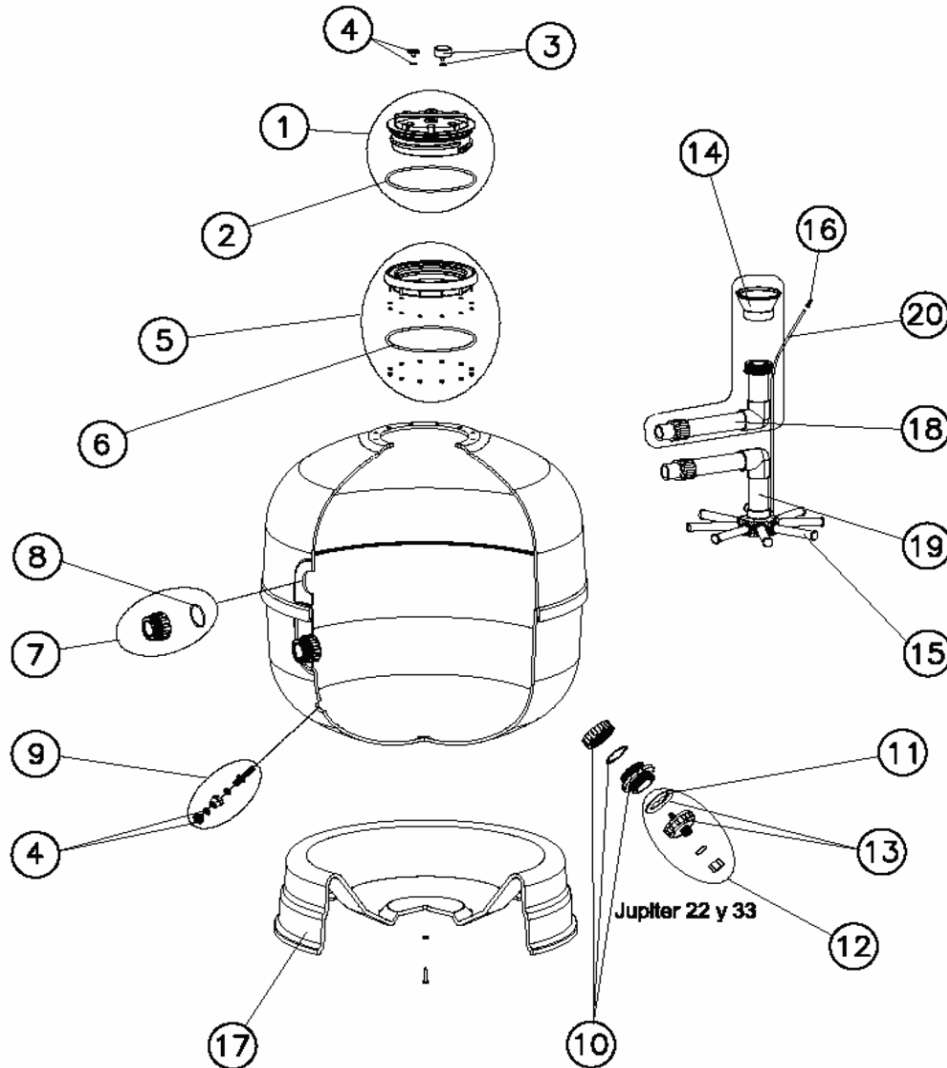
BESCHREIBUNG: **FILTER JUPITER SCHRAUBDECKEL**

HINWEISE

POS	CODE	HINWEISE
7	CE04230107	PARA 10010WSAOT, 10011WSAOT
7	CE04302131	PARA 10012WSAOT, 10013WSAOT, 10015WSAOT
14	CE04301004	PARA 10010WSAOT, 10011WSAOT
14	CE04300910	PARA 10012WSAOT, 10013WSAOT, 10015WSAOT
15	CE04300917	PARA (10010WSAOT - 4), (10011WSAOT - 4)
15	CE04300915	PARA (10012WSAOT - 4), (10015WSAOT - 4)
15	CE04290109	PARA (10013WSAOT - 6)
17	00498R0403	PARA 10010WSAOT
17	19781R0401	PARA 10011WSAOT
17	144016013	PARA 10012WSAOT, 10015WSAOT
17	00500R0401	PARA 10013WSAOT
18	10014R0410	PARA 10010WSAOT
18	00499R0410	PARA 10011WSAOT
18	10019R0410	PARA 10015WSAOT
18	00500R0410	PARA 10012WSAOT
18	10018R0410	PARA 10013WSAOT
19	15785R0421	PARA 10010WSAOT
19	04967R0421	PARA 10011WSAOT
19	10019R0420	PARA 10015WSAOT
19	10017R0420	PARA 10012WSAOT
19	10018R0420	PARA 10013WSAOT

CODIGO **10010WSAOT, 10011WSAOT, 10012WSAOT, 10013WSAOT, 10015WSAOT**

DESCRIÇÃO: **FILTRO JÚPITER TAMPA ENROSCADA**



PORTUGUES

POS	CODIGO	DESCRIÇÃO	POS	CODIGO	DESCRIÇÃO
1	CE04020003	TAMPA ROSCADA + JUNTA	15	* CE04290109	"BRAÇO COLECTOR 1''' 265 M/M."
2	CE04260202	JUNTA TAMPA	16	CE04040108	PURGA AREIA
3	CE04180405	"MANOMETRO 1/8''' 3 KG./CM"	17	* 00498R0403	"PÉ 9''''"
4	CE04040113	TAMPÃO PURGA E JUNTA	17	* 19781R0401	"PÉ 14''''"
5	CE04260205	ARO TAMPA COMPLETO	17	* 144016013	"PÉ 18 - 22''''"
6	CE04020116	JUNTA TÓRICA 255X4	17	* 00500R0401	"PÉ 33''''"
7	* CE04230107	RACORD 1 1/2" + JUNTA	18	* 10014R0410	"DIFUSOR 9''''"
7	* CE04302131	"ACOPLADOR 2''' E JUNTA"	18	* 00499R0410	CONJUNTO DIFUSOR ASTER D. 600
8	CE04040115	JUNTA TÓRICA D 60X8	18	* 10019R0410	"DIFUSOR 18''''"
9	CE04040110	PURGA ÁGUA 3/8" NOVA	18	* 00500R0410	CONJUNTO DIFUSOR D. 750
10	CE04260501	MANGUITO DESCARREGA	18	* 10018R0410	"DIFUSOR 33''''"
11	CE04180108	JUNTA PLANA FILTRO	19	* 15785R0421	"CONJ. COLECTOR VOLCANO D. 450 1''''"
12	CE04180114	PURGA AREIA 2"	19	* 04967R0421	"CONJ. COLECTOR 14''''"
13	CE04290106	PORCA DESCARGA EXTERIOR	19	* 10019R0420	"CONJ. COLECTOR 18''''"
14	* CE04301004	CONO DIFUSOR D. 50	19	* 10017R0420	"CONJ. COLECTOR 22''''"
14	* CE04300910	CONO DIFUSOR D. 63	19	* 10018R0420	"CONJ. COLECTOR 33''''"
15	* CE04300917	"BRAÇO COLECTOR 1''' 110 MM"	20	CE04301003	PURGA AR + TUBO L=670
15	* CE04300915	"BRAÇO COLECTOR 1''' 175 MM"			

CODIGO **10010WSAOT, 10011WSAOT, 10012WSAOT, 10013WSAOT, 10015WSAOT**DESCRIÇÃO: **FILTRO JÚPITER TAMPA ENROSCADA****OBSERVAÇÕES**

POS	CODIGO	OBSERVAÇÕES
7	CE04230107	PARA 10010WSAOT, 10011WSAOT
7	CE04302131	PARA 10012WSAOT, 10013WSAOT, 10015WSAOT
14	CE04301004	PARA 10010WSAOT, 10011WSAOT
14	CE04300910	PARA 10012WSAOT, 10013WSAOT, 10015WSAOT
15	CE04300917	PARA (10010WSAOT - 4), (10011WSAOT - 4)
15	CE04300915	PARA (10012WSAOT - 4), (10015WSAOT - 4)
15	CE04290109	PARA (10013WSAOT - 6)
17	00498R0403	PARA 10010WSAOT
17	19781R0401	PARA 10011WSAOT
17	144016013	PARA 10012WSAOT, 10015WSAOT
17	00500R0401	PARA 10013WSAOT
18	10014R0410	PARA 10010WSAOT
18	00499R0410	PARA 10011WSAOT
18	10019R0410	PARA 10015WSAOT
18	00500R0410	PARA 10012WSAOT
18	10018R0410	PARA 10013WSAOT
19	15785R0421	PARA 10010WSAOT
19	04967R0421	PARA 10011WSAOT
19	10019R0420	PARA 10015WSAOT
19	10017R0420	PARA 10012WSAOT
19	10018R0420	PARA 10013WSAOT